

COMMERCIAL SPACE FOR LEASE

THE ARTS HOUSE

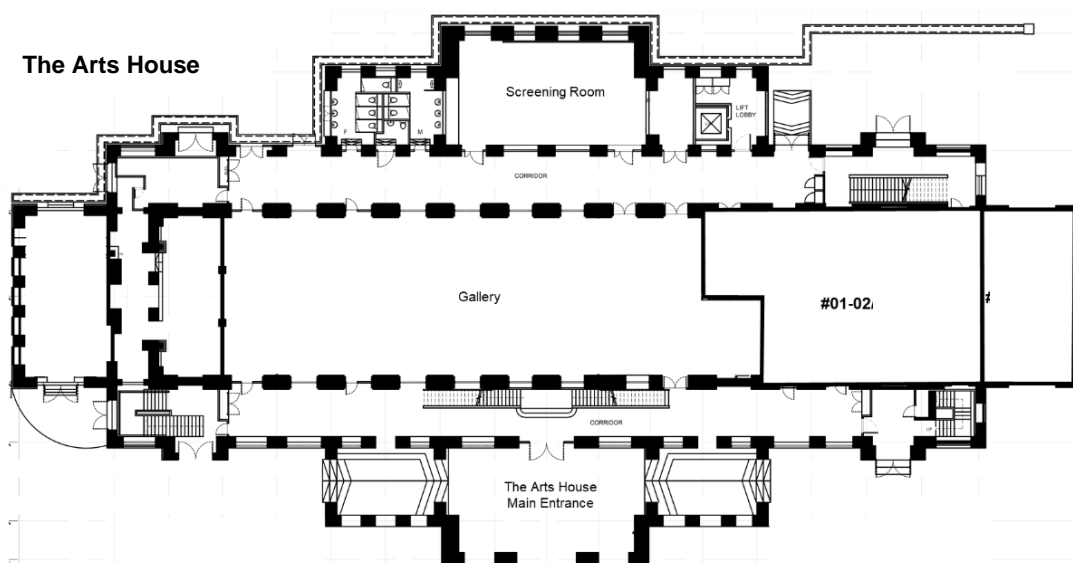


Location	Zone / Description	Introduction	Remarks
1 Old Parliament Lane, Singapore 179429	Civic & Community Institution, National Monument	Designed by prominent architect G.D. Coleman and built in 1827, The Arts House is Singapore's oldest colonial building. It served many uses and was the Parliament of Singapore until the new Parliament Complex was built. In 1992, it was gazetted a national monument and is today home to The Arts House.	No public parking facilities. Alternative parking available at Parliament House, The Adelphi and National Gallery Singapore.

UNIT AVAILABILITY

Unit No.	Area (sf) (subject to survey)	Availability	M&E Provision *subject to final site verification	Existing/ Preferred Trade
#01-02	2,248	Immediate *Deadline for offer submission: 15 October 2021	1. Flooring: Tiles 2. Electrical: 125 Amp 3P 3. Water Supply: Yes 4. Grease Trap: Yes 5. Kitchen Exhaust: Subject to availability 6. Air-conditioning: Yes	F&B / F&B-related

FLOOR PLAN



All plans are not drawn to scale and subject to changes. Floor plans are based on original condition and added architectural features may not be reflected. All floor areas are estimated and subject to final survey. M&E provisions are subject to final confirmation and site conditions at handover.

GOODMAN ARTS CENTRE

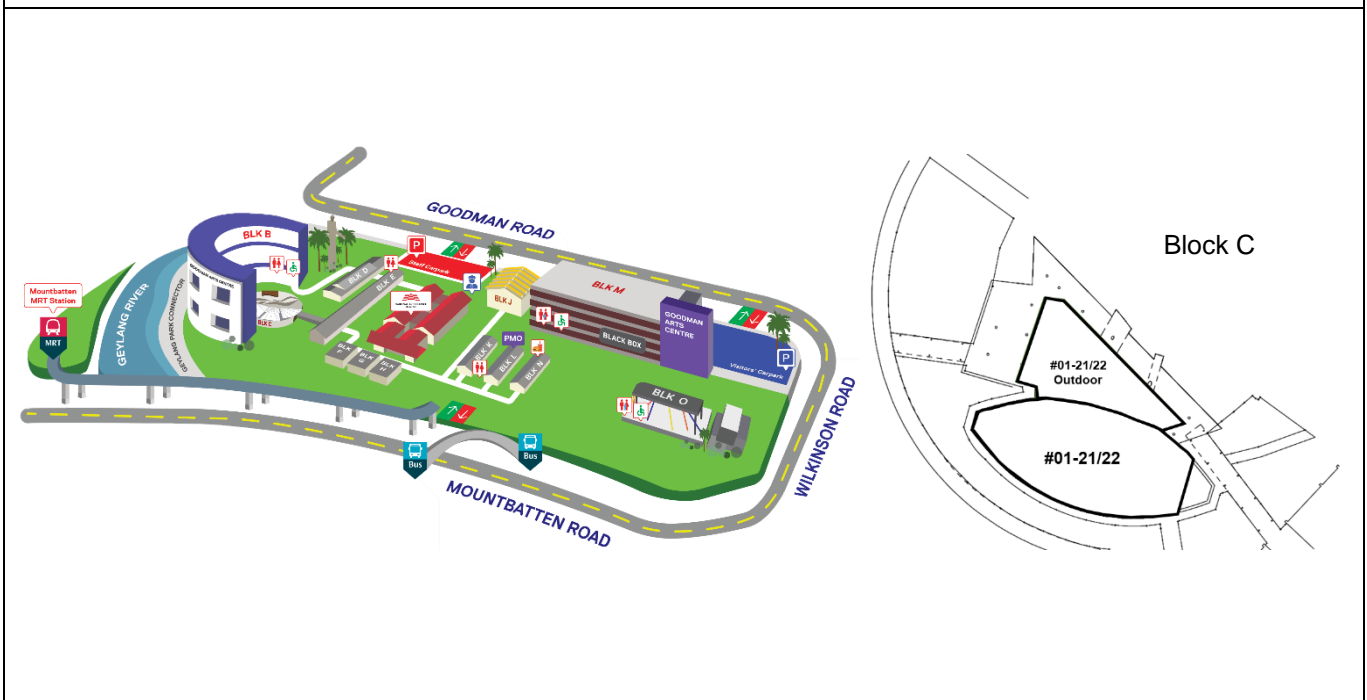


Location	Zone / Description	Introduction	Remarks
90 Goodman Road, Singapore 439053	Educational Institution	Goodman Arts Centre is a 7-acre arts hive nestled within the culturally-rich Mountbatten district. Since its establishment in 2011, the centre serves as a place to bring artists, enthusiasts and neighbouring communities together to experience the arts in a warm and intimate manner.	Limited parking lots at Goodman Arts Centre's public carpark. More parking lots at Kampong Kayu Road

UNIT AVAILABILITY

Unit No.	Area (sf) (subject to survey)	Availability	M&E Provision *subject to final site verification	Existing/ Preferred Trade
#01-21/22 Block C	Total: 4,691 Indoor: 3,083 Outdoor: 1,608	Immediate *Deadline for offer submission: 15 October 2021	1. Flooring: Cement Screed 2. Electrical: 100 Amp 3P 3. Water Supply: 20mm diameter 4. Grease Trap: Yes 5. Kitchen Exhaust: Tenant to install 6. Air-conditioning: Tenant to install	F&B / F&B-integrated / lifestyle-related / Services / Arts-related

SITE PLAN / FLOOR PLAN



All plans are not drawn to scale and subject to changes. Floor plans are based on original condition and added architectural features may not be reflected. All floor areas are estimated and subject to final survey. M&E provisions are subject to final confirmation and site conditions at handover.

VICTORIA THEATRE AND VICTORIA CONCERT HALL

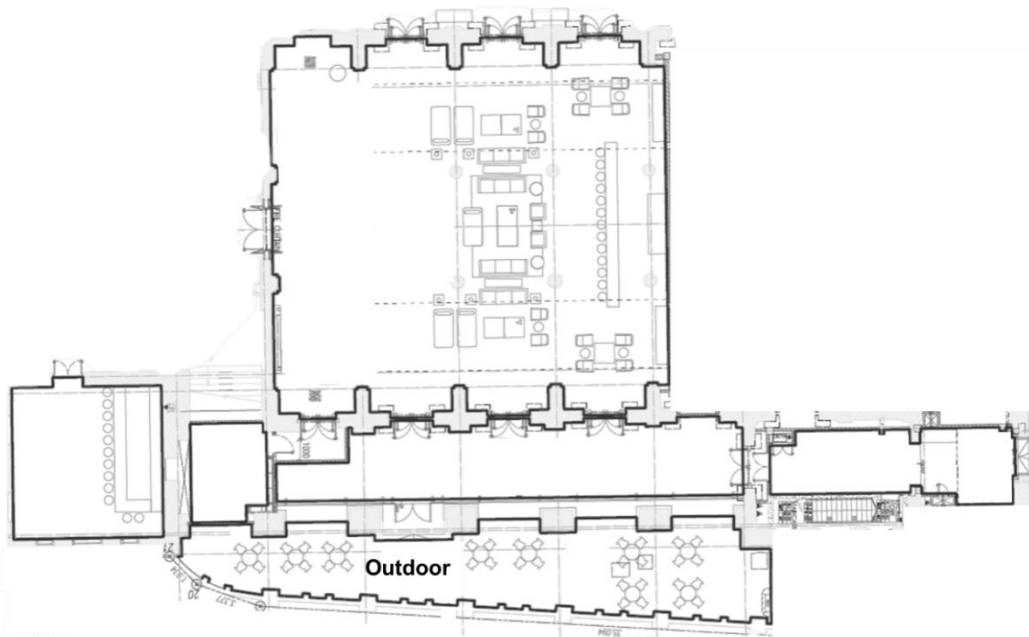


Location	Zone / Description	Introduction	Remarks
9 Empress Place, Singapore 179556	Civic & Community Institution, National Monument	Established in 1862, the Victoria Theatre & Victoria Concert Hall is one of the most recognisable landmarks in Singapore. The national monument underwent a four-year refurbishment to restore its neo-classical façade while getting new state-of-the-art facilities and amenities. The Victoria Theatre & Victoria Concert Hall continues to be an exciting mid-sized platform, supporting the growth of Singapore's arts industry.	No public parking facilities. Alternative parking available at Parliament House, The Adelphi and National Gallery Singapore.

UNIT AVAILABILITY

Unit No.	Area (sf) (subject to survey)	Availability	M&E Provision *subject to final site verification	Existing/ Preferred Trade
#01-01/03/04/05	7,231.8 Indoor: 6,026.23 Outdoor: 1,205.57	Q2 2022	1. Flooring: Marble 2. Electrical: 150 Amp 3P; 10 nos. 2 double gang 13Amp power points 3. Water Supply: Yes 4. Grease Trap: Yes 5. Kitchen Exhaust: Subject to availability 6. Air-conditioning: Yes	F&B / F&B-integrated

FLOOR PLAN



All plans are not drawn to scale and subject to changes. Floor plans are based on original condition and added architectural features may not be reflected. All floor areas are estimated and subject to final survey. M&E provisions are subject to final confirmation and site conditions at handover.

No part of this document may be reproduced or transmitted in any form or by any means or stored in any retrieval system of any nature without prior written permission in writing of Arts House Ltd.